

Case Study:

Private Residence

Bainbridge Island, WA

Type of Project:

New Residential

Contractor:

Collins Homes, Inc

Completion Date:

2006

Glass Make:

IBP Glass Walk™ System – Clear Anodized Aluminum Grid with “Negative Dot” Traction control pattern on Surface #1 and same glass make for custom stair treads; all Clear Glass.

Unique Requirements/ Characteristics/Services:

With large floor to ceiling windows this glass was the perfect custom touch to show off the expansive view of Puget Sound, and the ideal solution to create a spacious feel while also admitting an abundance of natural light.



Case Study:

Madison Park Condominiums

Seattle, WA

Type of Project:

New Commercial Condominium

Contractor:

Dyna Contracting

Completion Date:

2007

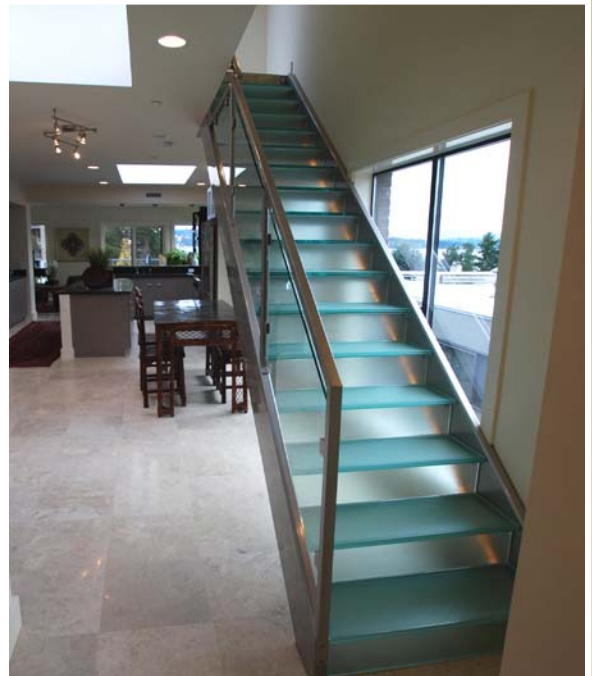
Glass Make:

Custom Laminated Glass made of 12mm Clear Tempered / 10mm Clear Tempered with Full Flood Coverage Traction Control Frit on Surface #1 and Full Coverage Etch Frit for Privacy on Surface #3.

Unique Requirements/
Characteristics/Services:

With a large skylight on the second floor, this glass was a fitting solution to transfer light from above as well as from the side.

This staircase also included a glass riser to be used as a toe kick. This toe kick helped to overcome the building code requirement of having no more than a 4" opening between stair treads.



Case Study:

Private Residence

Kirkland, WA

Type of Project:

New Residential

Contractor:

Odyssey Builders, Inc.

Completion Date:

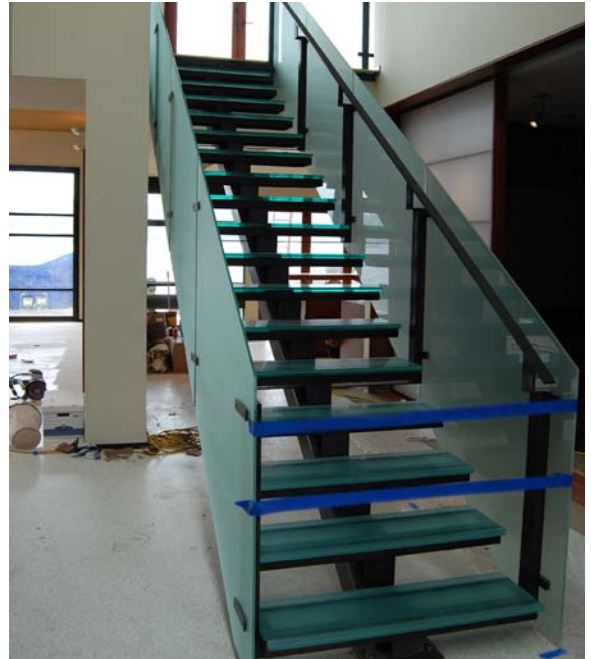
April 9, 2007

Glass Make:

Custom Laminated Glass made of 12mm Clear Tempered / 10mm Clear Tempered with Standard Dot Pattern Traction Control Frit on Surface #1 and Full Coverage Etch Frit on Surface #3 for Privacy.

Unique Requirements/ Characteristics/Services:

This staircase was designed to fit the modern Architecture style of the residence, and allow light transfer to the surrounding living space. The staircase stands out as one of the predominant features of this project's design elements.



Case Study:

Kiro 7 Concept Home

Showcase Residential Home, Seattle, WA

Type of Project:

New Residential

Contractor:

MacPherson Construction & Design, Inc.

Completion Date:

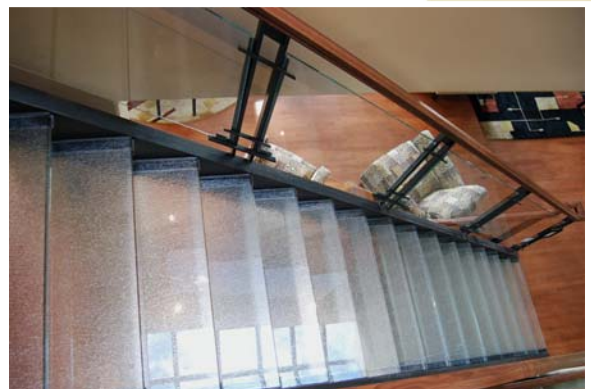
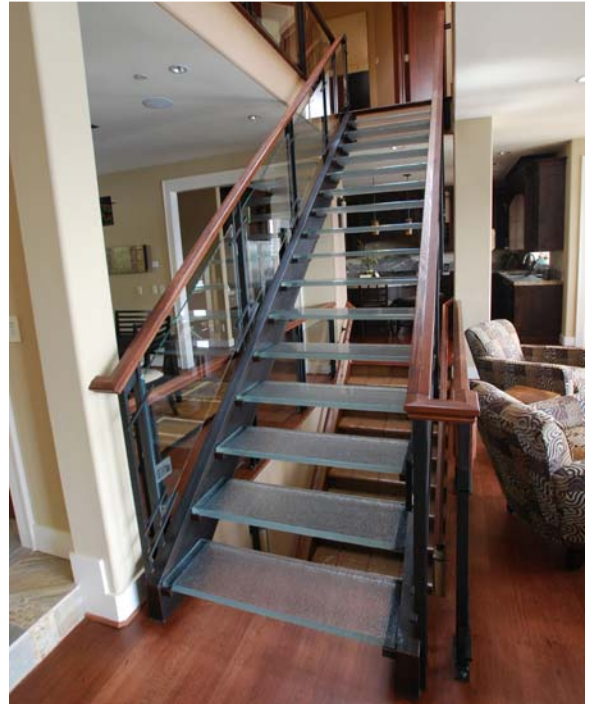
2007

Glass Make:

Custom Laminated Glass made of 10mm Starphire (special edging) Tempered / 10mm Krystal Rain Tempered. Mezzo pattern Traction Control Frit on Surface #1 and Texture on Surface #6 with Vertical Pattern. All edges flat polished and ½ polished miter on Surface #1.

Unique Requirements/ Characteristics/Services:

With a large skylight on the second floor, this glass stair application was a fitting solution to transfer light from above to the main living space below. This staircase was set in the center of the main floor and is a design centerpiece for the home.



Case Study:

Private Residence

Kirkland, WA

Type of Project:

New Residential

Contractor:

Kelleran Custom Homes

Completion Date:

2004

Glass Make:

Custom Laminated Glass made of 10mm Clear Tempered / 10mm Clear Tempered / 4mm Float Pattern 182 / 10mm Clear Tempered with Traction Control Frit Pattern GL-D05 Mezzo.

Unique Requirements/ Characteristics/Services:

This glass bridge fit the simple yet modern architectural style of the residence and added a feature that brought much needed light from the second floor to the main living area.



Case Study:

Private Residence

Corpus Christi, TX

Type of Project:

Residential Remodel

Contractor:

Spiral Staircase Systems, Inc.

Completion Date:

2007

Glass Make:

Custom Laminated Glass made of 12mm Clear Tempered / 10mm Clear Tempered with Standard Dot Pattern Traction Control Frit on Surface #1 and Full Coverage Etch Frit on Surface #3 for Privacy.

Unique Requirements/ Characteristics/Services:

A spiral staircase constructed of opaque materials would have created a dark space. By utilizing structural glass treads along with a glass railing system, maximum light transmittal was achieved to bring light to the lower living area of this residence.



Case Study:

Ventura Lofts

Houston, TX

Type of Project:

New Luxury Condominium

Contractor:

Spiral Staircase Systems, Inc.

Completion Date:

February 2008

Glass Make:

Custom Laminated Glass made of 12mm Starphire Tempered / 10mm Starphire Tempered with Standard Dot Pattern Traction Control frit on Surface #1, & Custom Shapes Finished with Flat Polished Edgework.

Unique Requirements/ Characteristics/Services:

This glass and steel staircase was designed to be a focal point of the lobby of this modern luxury condominium project located in the Houston area. Clear structural glass and brushed stainless steel work together for a clean, contemporary look.



Case Study:

Private Residence

Mercer Island, WA

Type of Project:

Dock Re-Light

Contractor:

Gateway Construction Services

Completion Date:

April 2007

Glass Make:

Custom Laminated Glass Made of 15mm Clear Tempered / 12mm Clear Tempered with Standard Dot Pattern Traction Control Frit on Surface #1 and Full Coverage Etch Frit on Surface #3 Finished with Flat Polished Edgework.

Unique Requirements/ Characteristics/Services:

Required by the Army Corp of Engineers to allow light to reach the area under the dock so that wildlife and plant life were not affected, this home owner decided on an innovative solution of dock-mounted structural glass. Careful selection of layer transparency was required to allow the proper amount of light transmission and a traction control coating was necessary because of the moisture rich environment.

